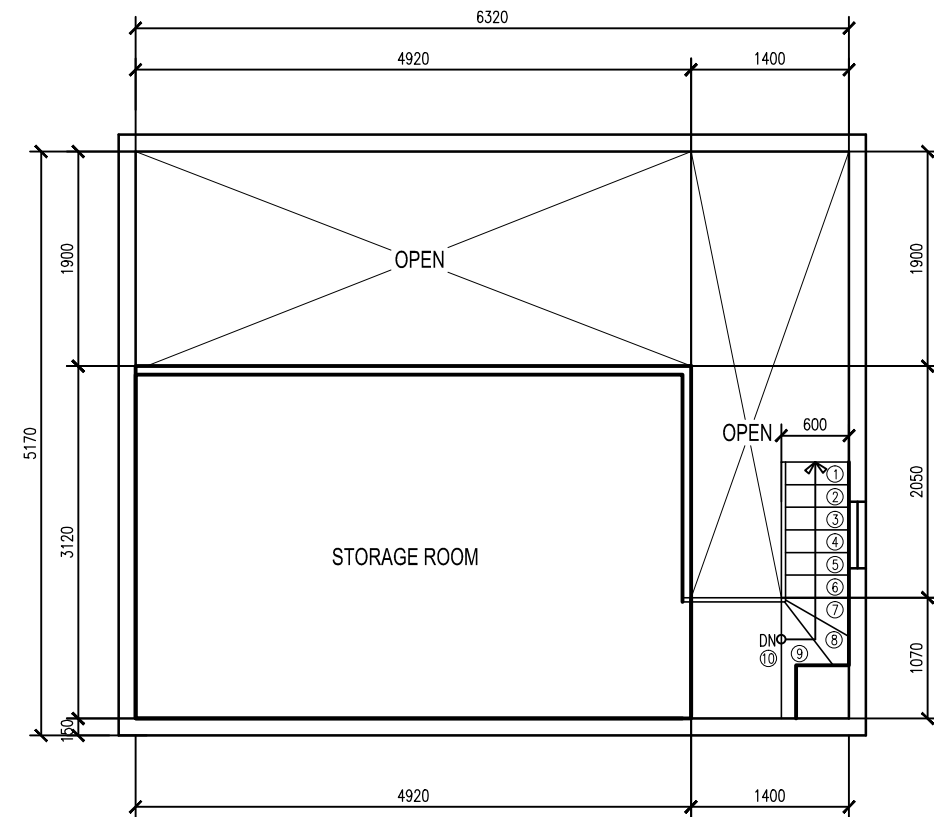
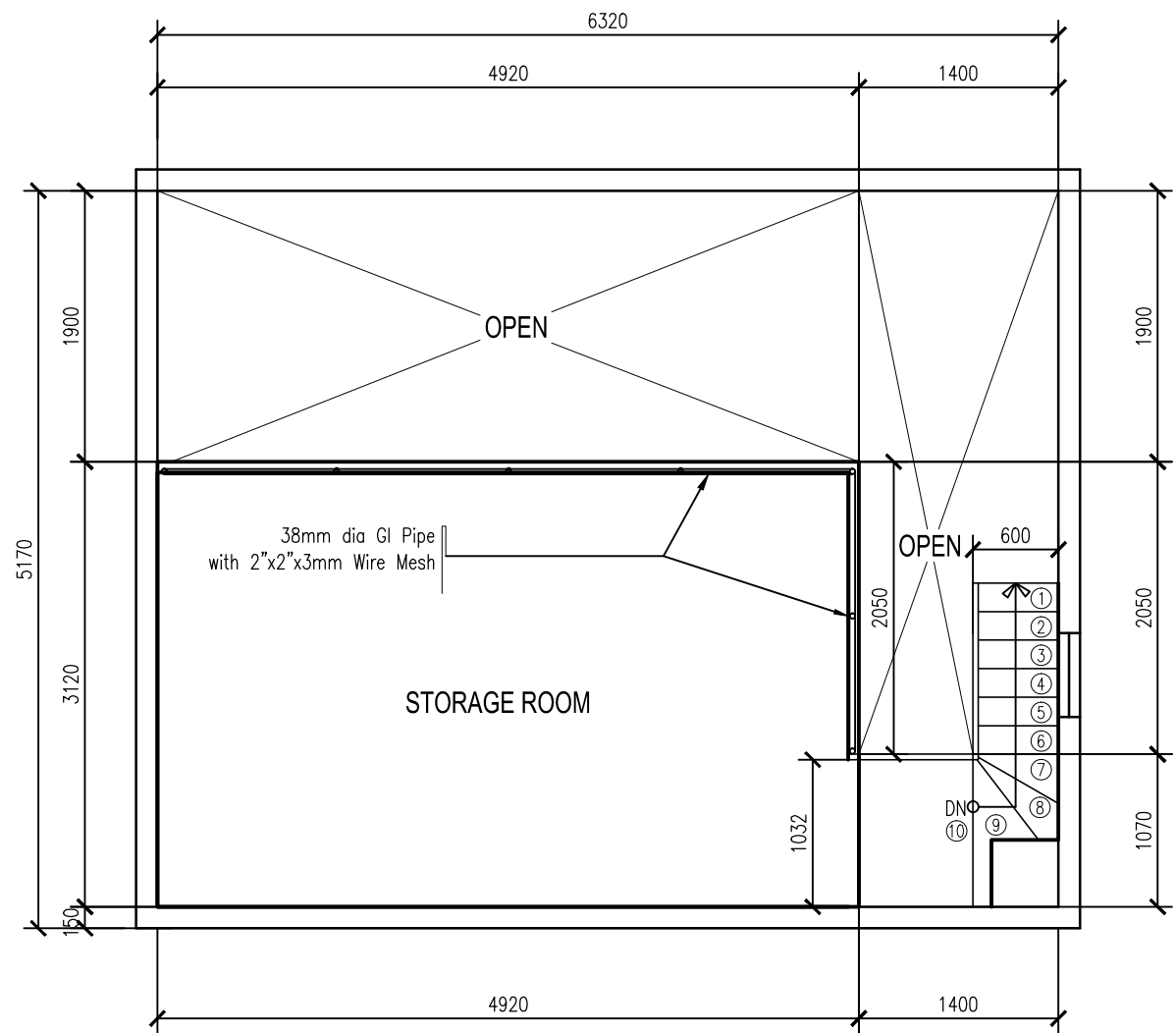


1 GROUND FLOOR PLAN  
A-2 SCALE: 1:50

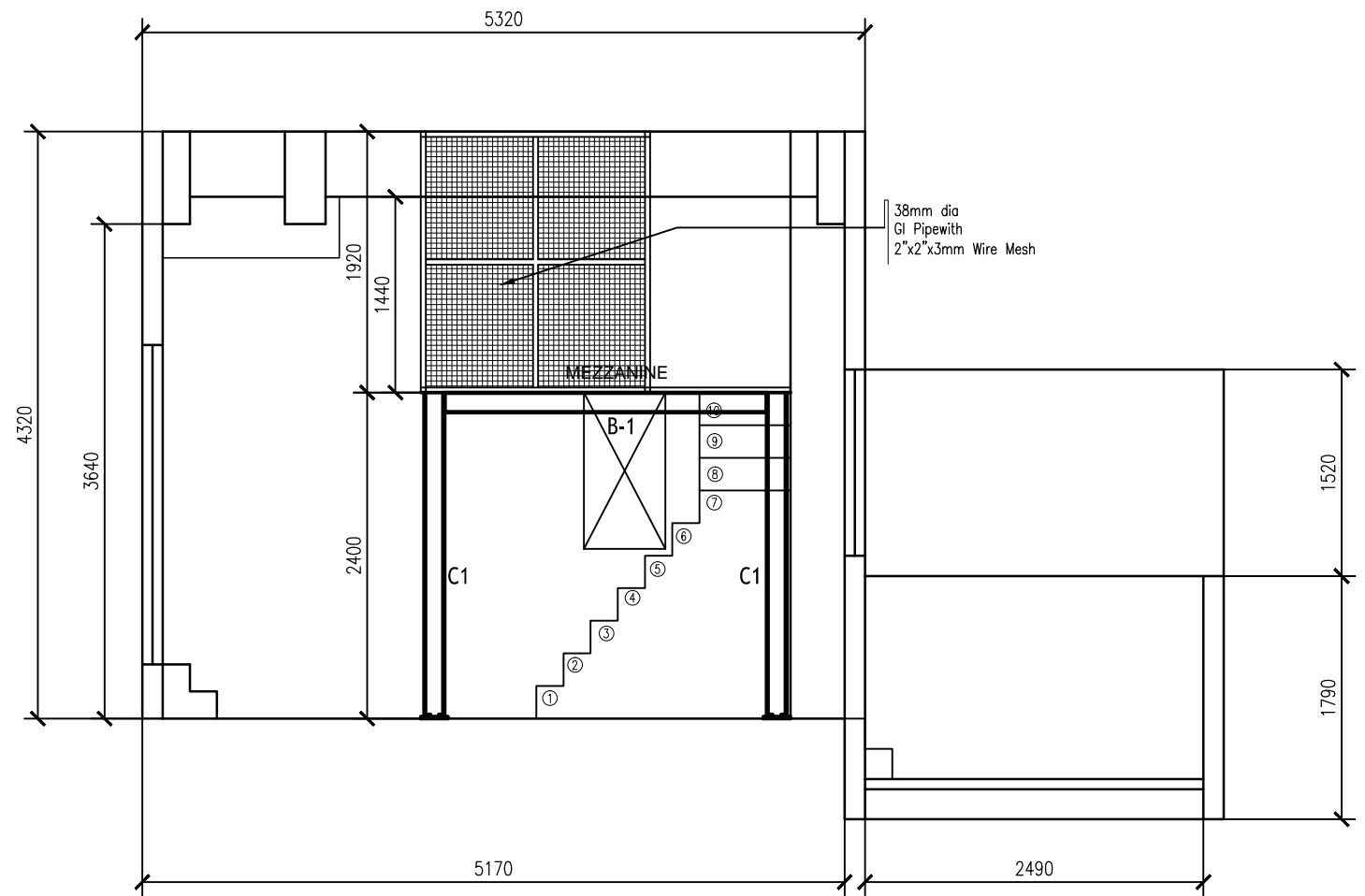


2 MEZZANINE FLOOR PLAN  
A-2 SCALE: 1:50

PROJECT TITLE REDEVELOPMENT FOR HMMS ANNEX, REPAIR ROOM AND STORAGE	SHEET NO. <b>A-2</b>	DRAWN BY: EDGAR DELA CRUZ FACILITIES SPECIALIST II	CHECK BY ROMEO M. PELAGIO OIC, INFRA UNIT, ETSD	VERIFIED BY JESSIE B. ARCE CHIEF, MEIES, ETSD	NOTED BY MAXIMO PERALTA OIC, ETSD	RECOMMENDING APPROVAL CATALINO L. DAVIS DA, AES	APPROVED BY: DR. VICENTE B. MALANO ADMINISTRATOR
LOCATION FIRST FLOOR PAGASA, WFFC COMPOUND, AGHAM RD., DILIMAN, QUEZON CITY							



1 MEZZANINE - MESH WIRE PLAN  
 A-7 SCALE: NTS



2 MEZZANINE - MESH WIRE SECTION  
 A-7 SCALE: NTS

PROJECT TITLE REDEVELOPMENT FOR HMMS ANNEX, REPAIR ROOM AND STORAGE	SHEET NO. <b>A-7</b>	DRAWN BY: EDGAR DELA CRUZ FACILITIES SPECIALIST II	CHECK BY ROMEO M. PELAGIO OIC, INFRA UNIT, ETSD	VERIFIED BY JESSIE B. ARCE CHIEF, MEIES, ETSD	NOTED BY MAXIMO PERALTA OIC, ETSD	RECOMMENDING APPROVAL CATALINO L. DAVIS DA, AES	APPROVED BY: DR. VICENTE B. MALANO ADMINISTRATOR
LOCATION FIRST FLOOR PAGASA, WFFC COMPOUND, AGHAM RD., DILIMAN, QUEZON CITY							

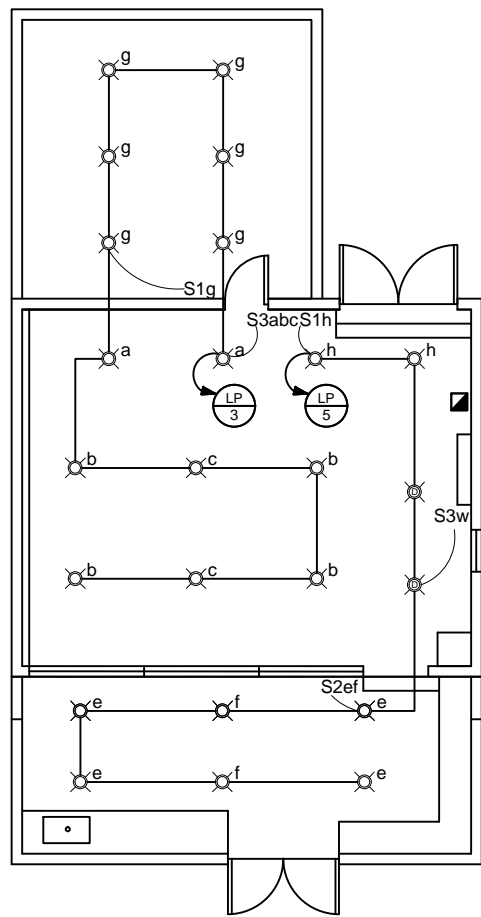
ALUMINUM AWNING/FIXED WINDOW	
<p>USE 6MM THK CLEAR GLASS STEEL AWNING WINDOW FRAME (SUBMIT SAMPLE FOR ARCHITECT'S APPROVAL)</p>	<p>USE 6MM THK CLEAR GLASS STEEL AWNING WINDOW FRAME (SUBMIT SAMPLE FOR ARCHITECT'S APPROVAL)</p>
1 SET	1 SET

1 SCHEDULE OF WINDOWS  
A-5 SCALE: NTS

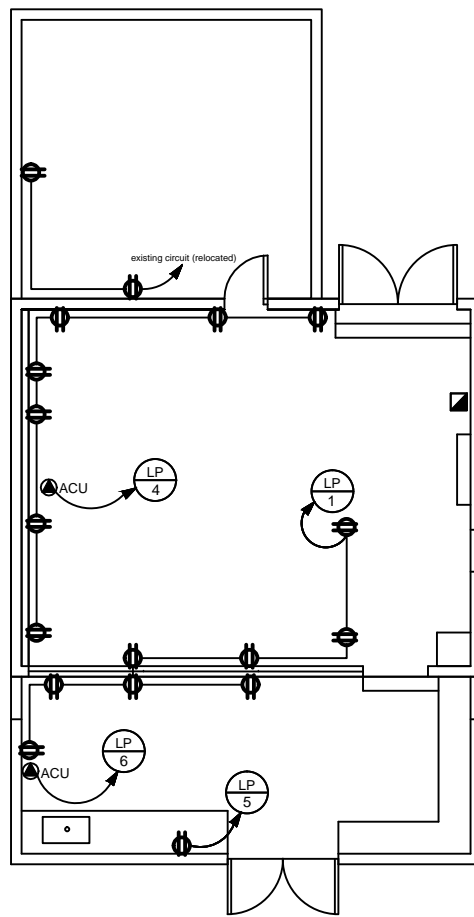
SCHEDULE OF DOOR	
<p>USE 12MM THK CLEAR FRAMELESS TEMPERED GLASS DOUBLE SWING DOOR</p>	<p>USE 9MM THK FROSTED FRAMELESS TEMPERED GLASS SINGLE SWING DOOR</p>
1 SET	1 SET

2 SCHEDULE OF DOORS  
A-5 SCALE: NTS

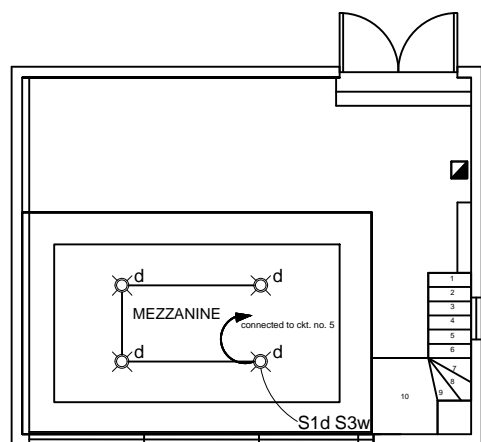
<b>PROJECT TITLE</b> REDEVELOPMENT FOR HMMS ANNEX, REPAIR ROOM AND STORAGE	<b>SHEET NO.</b> <b>A-5</b>	<b>DRAWN BY:</b> EDGAR DELA CRUZ WX. FACILITIES SPECIALIST II	<b>CHECK BY</b> ROMEO M. PELAGIO OIC, INFRA UNIT, ETSD	<b>VERIFIED BY</b> JESSIE B. ARCE CHIEF, MEIES, ETSD	<b>NOTED BY</b> MAXIMO PERALTA OIC, ETSD	<b>RECOMMENDING APPROVAL</b> CATALINO L. DAVIS DA, AES	<b>APPROVED BY:</b> DR. VICENTE B. MALANO ADMINISTRATOR
<b>LOCATION</b> FIRST FLOOR PAGASA, WFFC COMPOUND, AGHAM RD., DILIMAN, QUEZON CITY							



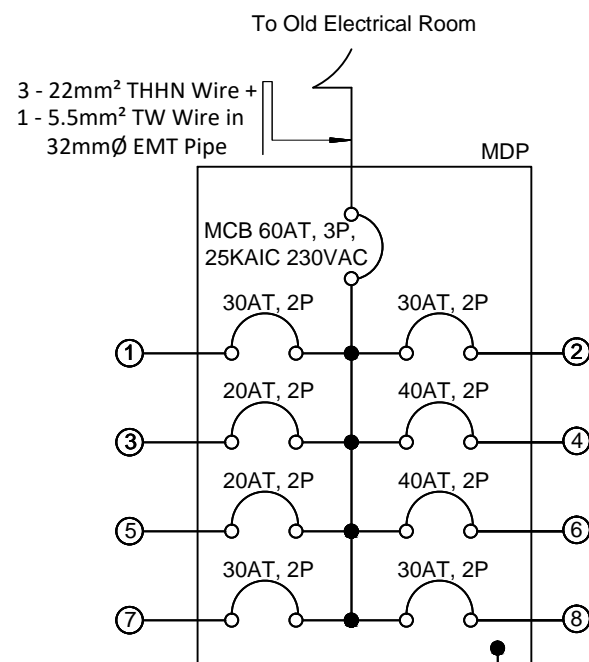
GROUND FLOOR LIGHTING LAYOUT  
SCALE: NTS



POWER LAYOUT  
SCALE: NTS



MEZZANINE LIGHTING LAYOUT  
SCALE: NTS



RISER DIAGRAM  
SCALE: NTS

1. ALL ELECTRICAL WORKS SHALL BE DONE IN ACCORDANCE WITH THE PROVISION OF THE LATEST EDITION OF THE PHILIPPINE ELECTRICAL CODE, THE RULES AND REGULATION OF THE LOCAL GOVERNMENT AGENCY CONCERNED, AND THE POLICIES OF THE LOCAL POWER COMPANY.
2. ALL CIRCUITS SHALL BE WIRED NOT LESS THAN 2.0mm², TYPE THHN/THWN FOR LIGHTING OUTLET AND 3.5mm² TYPE THHN/THWN FOR CONVENIENCE OUTLET.
3. ALL CONDUCTORS SHALL BE COPPER WIRE THHN/THWN/THW/TW TYPE, 600 VOLTS INSULATION.
4. ALL BRANCH CIRCUITS SHALL BE INSTALLED IN 15MMØ POLYVINYL CONDUIT @ 10ft./LENGTH (PVC) AND PLASTIC MOULDING (25mmx13mmx8ft) WITH SIZE INDICATED AND SHALL BE LAYED OUT UP TO THE NEW PANEL DISTRIBUTION BOARD.
5. ALL NON-CURRENT CARRYING PARTS SHALL BE ADEQUATELY AND EFFECTIVELY GROUNDED IN ACCORDANCE WITH THE REQUIREMENTS OF THE PHILIPPINE ELECTRICAL CODE.
6. ALL WALL OUTLETS SHALL BE INSTALLED AT THE FOLLOWING HEIGHT OF FINISHED FLOOR LEVEL UNLESS NOTED ON THE PLANS.
  - a. WALL SWITCHES ..... 1300mm
  - b. DUPLEX 3-PIN UNIVERSAL CONVENIENCE OUTLET... 300mm
7. ALL LIGHTING FIXTURES (PIN LIGHT) SHALL BE 12W DOWNLIGHT; 86V-286V, 720lm/390lm, DAYLIGHT, AND 150x65MM (6 INCHES)
8. ALL WALL OUTLETS AND EXPOSED CONDUITS SHALL BE LAID OUT PLUMB, SYMMETRICAL AND PERPENDICULAR TO THE BUILDING LINES.
9. ALL MATERIALS TO BE USED SHALL BE NEW AND OF THE APPROVED TYPE BEARING THE STAMP OF THE MANUFACTURER, TYPE OF LIGHTING FIXTURE SHALL BE COORDINATED WITH THE ARCHITECT OR OWNER FOR FINAL APPROVAL AND IN ACCORDANCE WITH THE GOVERNING STANDARDS.
10. PROVIDE EFFECTIVE AND ADEQUATE GROUNDS.
11. ALL ELECTRICAL WORKS SHALL BE DONE UNDER THE SUPERVISION OF A DULY LICENSED ELECTRICAL ENGINEER.

NOTES AND SPECIFICATIONS  
SCALE: NTS

PANEL :		Aircon Room Panel Board		ENCLOSURE :		NEMA 1			
MOUNTING :		Surface-Mounted		LOCATION :		Aircon Room @ Ground Floor			
CIRCUIT NO.	LOAD DESCRIPTION	A	B	C	3Ø V	SIZE OF WIRE		C.B. RATING	LOCATION
						THHN	TW		
1	8 - 180W C.O.	1440			230	6.26	2-3.5mm² 1-2.0mm²	15mmØ 30 60 2	Aircon Room
2	7 - 180W C.O.	1260			230	5.48	2-3.5mm² 1-2.0mm²	15mmØ 30 60 2	Aircon Room
3	14 - 23W P. L.		1400		230	6.09	2-2.0mm² 1-2.0mm²	15mmØ 20 60 2	Aircon Room
4	ACU; 3.0Hp			3910	230	17.00	2-5.5mm² 1-3.5mm²	20mmØ 40 60 2	Aircon Room
5	14 - 23W P.L.			1400	230	6.09	2-2.0mm² 1-2.0mm²	15mmØ 20 60 2	Aircon Room
6	ACU; 3.0Hp			3910	230	17.00	2-5.5mm² 1-3.5mm²	20mmØ 40 60 2	Aircon Room
7	Range; 1.5Kw	1500			230	6.52	2-3.5mm² 1-2.0mm²	15mmØ 30 60 2	Aircon Room
8	SPARE	750			230	3.26		30 60 2	Aircon Room
TOTAL		4950	5310	5310		67.70			

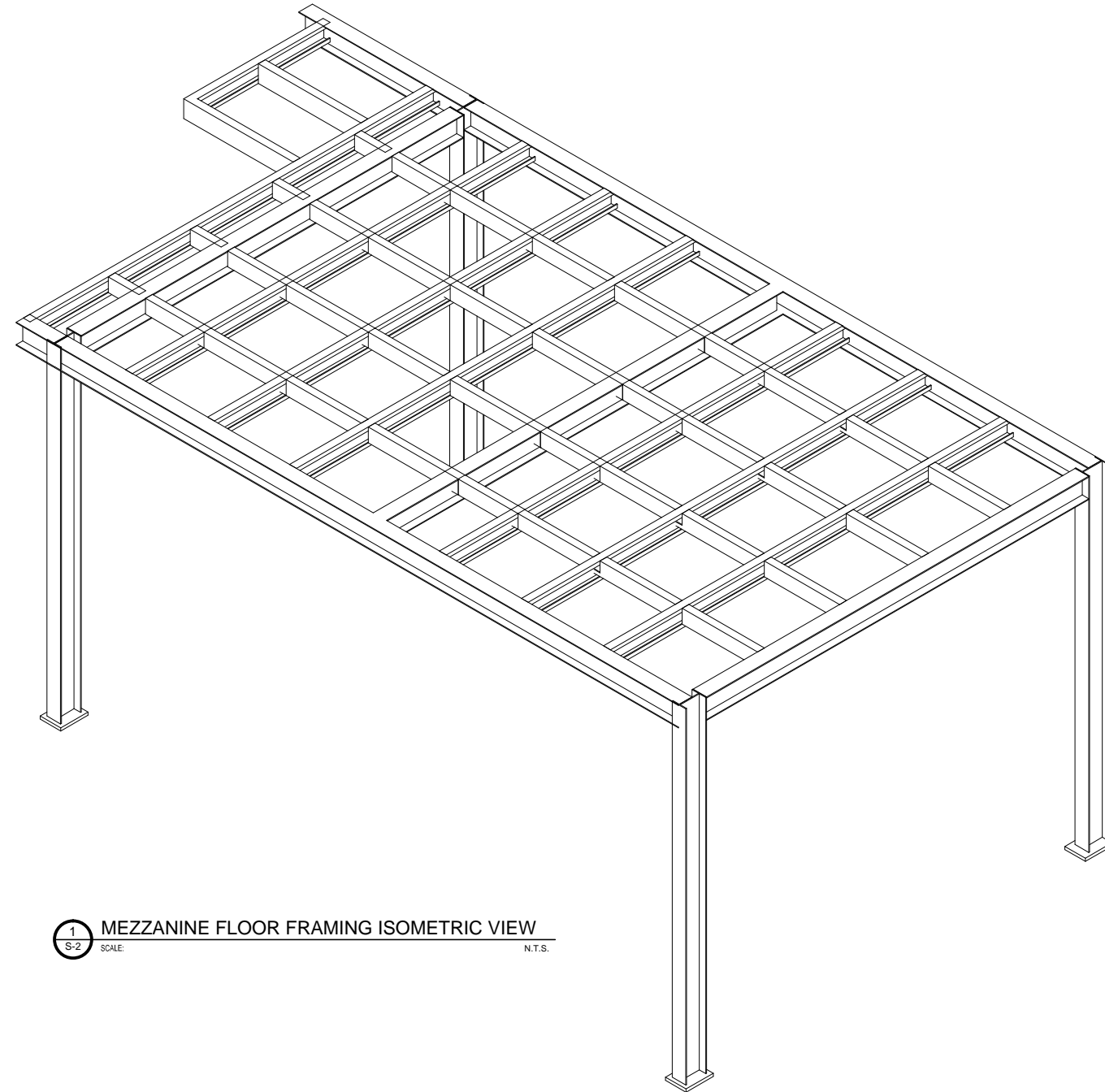
IT =  $\frac{3(5,310)}{\sqrt{3}(230)} = \frac{15,930}{398.37} = 39.99A - 17A + (2.5 \times 17A) = 65.49A$   
 = 65.49A x 70% D.F. = **45.84A**

TOTAL CURRENT : **45.84 Amp**  
 KVA : **10.54 kVA**

MCB : 60AT, 60AF, 3P, 25KAIC, 230V, 60Hz  
 FEEDER : 3-22mm² THHN Wire + 1-5.5mm² TW Wire (G) in 32mmØ EMT

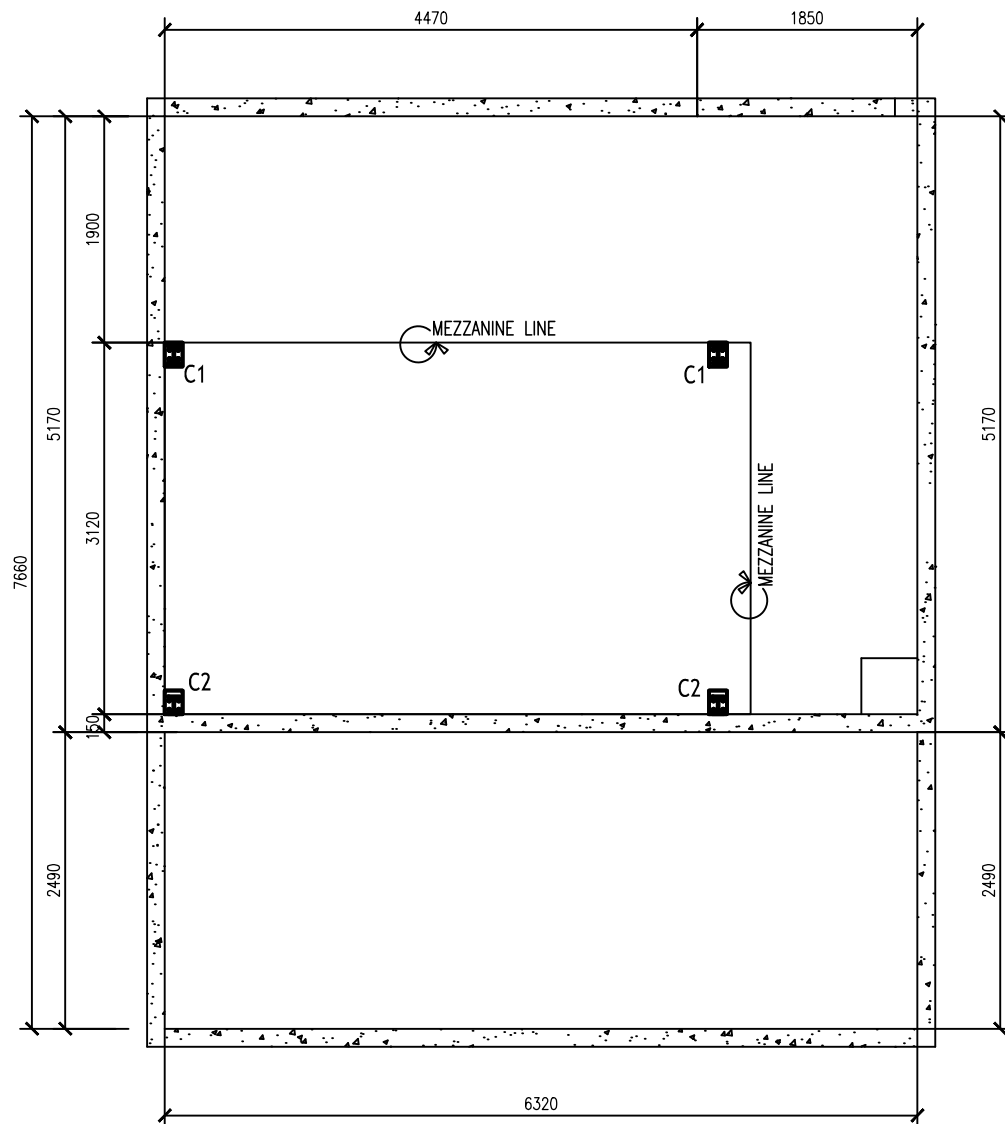
LOAD SCHEDULE  
SCALE: NTS

PROJECT TITLE	SHEET NO.	DRAWN BY:	CHECK BY	VERIFIED BY	NOTED BY	RECOMMENDING APPROVAL	APPROVED BY:
title	<b>E-1</b>	AARON CHESTER M. CRUZ J.O., METTSS, ETSD	DIOSDADO S. ORNUM WFS-II, METTSS, ETSD	JESSIE B. ARCE CHIEF, MEIES, ETSD	MAXIMO PERALTA OIC, ETSD	CATALINO L. DAVIS DA for A & ES	DR. VICENTE B. MALANO ADMINISTRATOR
LOCATION		FIRST FLOOR PAGASA, WFFC COMPOUND, AGHAM RD., DILIMAN, QUEZON CITY					



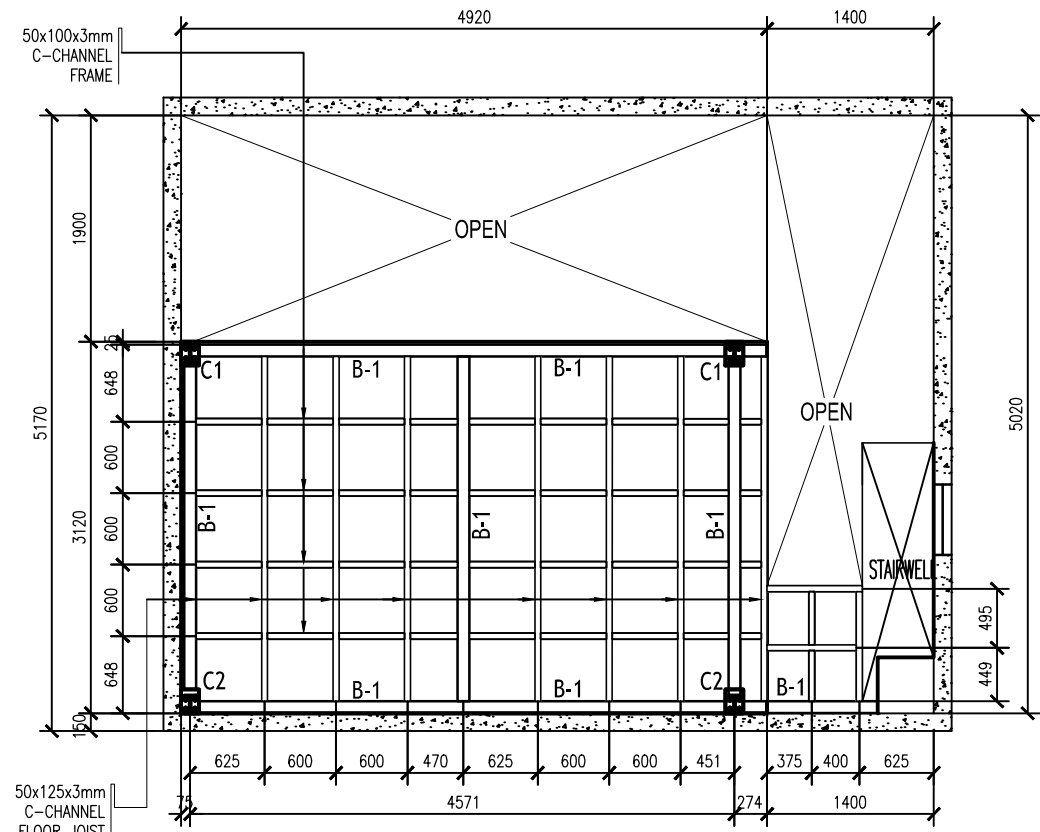
1 MEZZANINE FLOOR FRAMING ISOMETRIC VIEW  
 S-2 SCALE: N.T.S.

PROJECT TITLE REDEVELOPMENT FOR HMMS ANNEX, REPAIR ROOM AND STORAGE	SHEET NO. <b>S-2</b>	DRAWN BY: EDGAR DELA CRUZ FACILITIES SPECIALIST II	CHECK BY ROMEO M. PELAGIO OIC, INFRA UNIT, ETSD	VERIFIED BY JESSIE B. ARCE CHIEF, MEIES, ETSD	NOTED BY MAXIMO PERALTA OIC, ETSD	RECOMMENDING APPROVAL CATALINO L. DAVIS DA, AES	APPROVED BY: DR. VICENTE B. MALANO ADMINISTRATOR
LOCATION FIRST FLOOR PAGASA, WFFC COMPOUND, AGHAM RD., DILIMAN, QUEZON CITY							

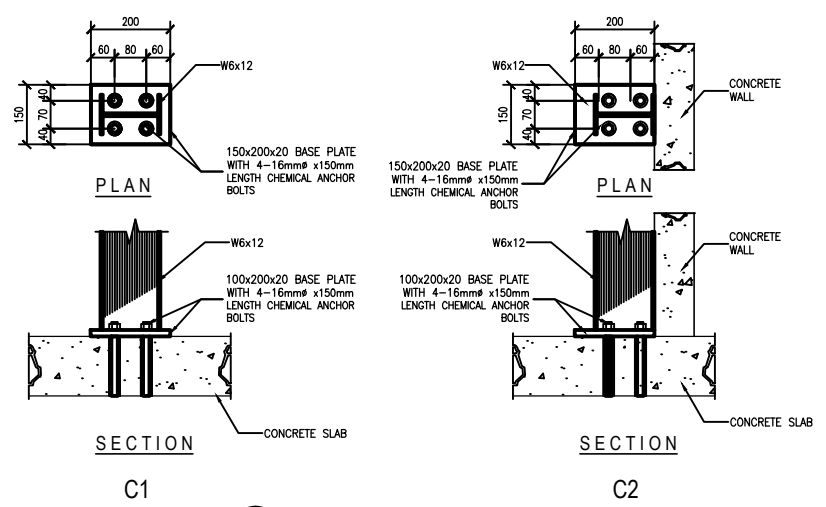


1 COLUMN SETTING-OUT LAYOUT @ OFFICE AREA  
SCALE: 1:50

STEEL COLUMN & MEMBER SCHEDULE		
SYMBOL	C1	B-1
SHAPE		
STAAD NAME	W6X12 (COLUMN)	W6x9 (MEMBER)

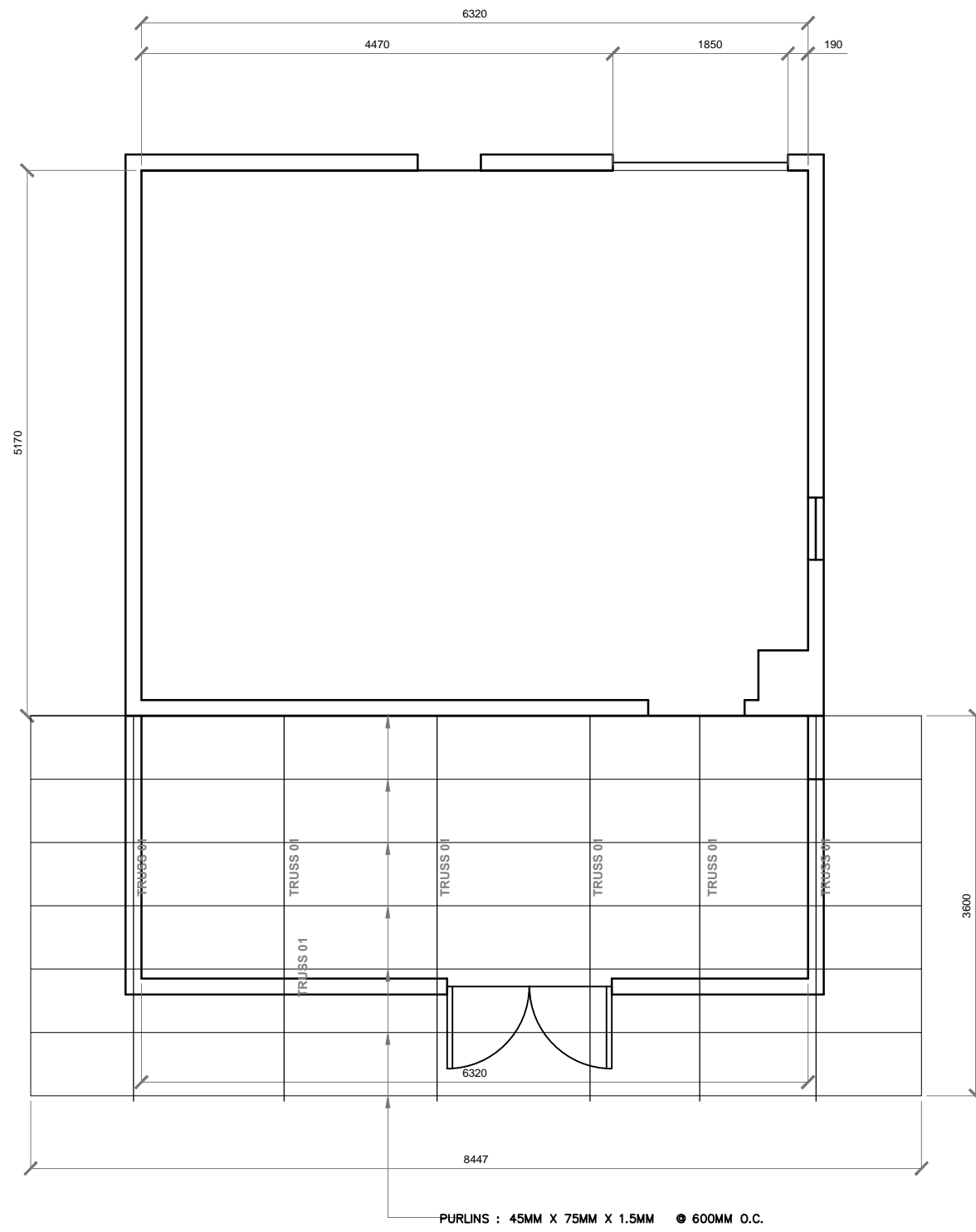


2 MEZZANINE FRAMING PLAN  
SCALE: 1:50

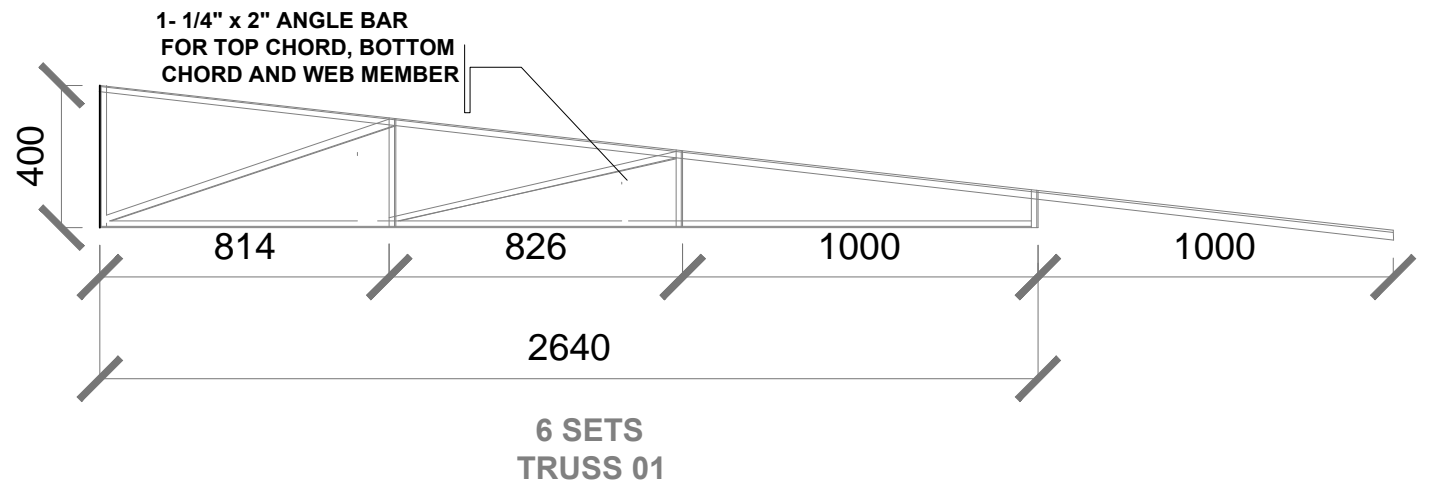


3 STEEL COLUMN DETAIL  
SCALE: 1:15

PROJECT TITLE REDEVELOPMENT FOR HMTS ANNEX, REPAIR ROOM AND STORAGE	SHEET NO. <b>S-1</b>	DRAWN BY: EDGAR DELA CRUZ FACILITIES SPECIALIST II	CHECK BY ROMEO M. PELAGIO OIC, INFRA UNIT, ETSD	VERIFIED BY JESSIE B. ARCE CHIEF, MEIES, ETSD	NOTED BY MAXIMO PERALTA OIC, ETSD	RECOMMENDING APPROVAL CATALINO L. DAVIS DA, AES	APPROVED BY: DR. VICENTE B. MALANO ADMINISTRATOR
LOCATION FIRST FLOOR PAGASA, WFFC COMPOUND, AGHAM RD., DILIMAN, QUEZON CITY							

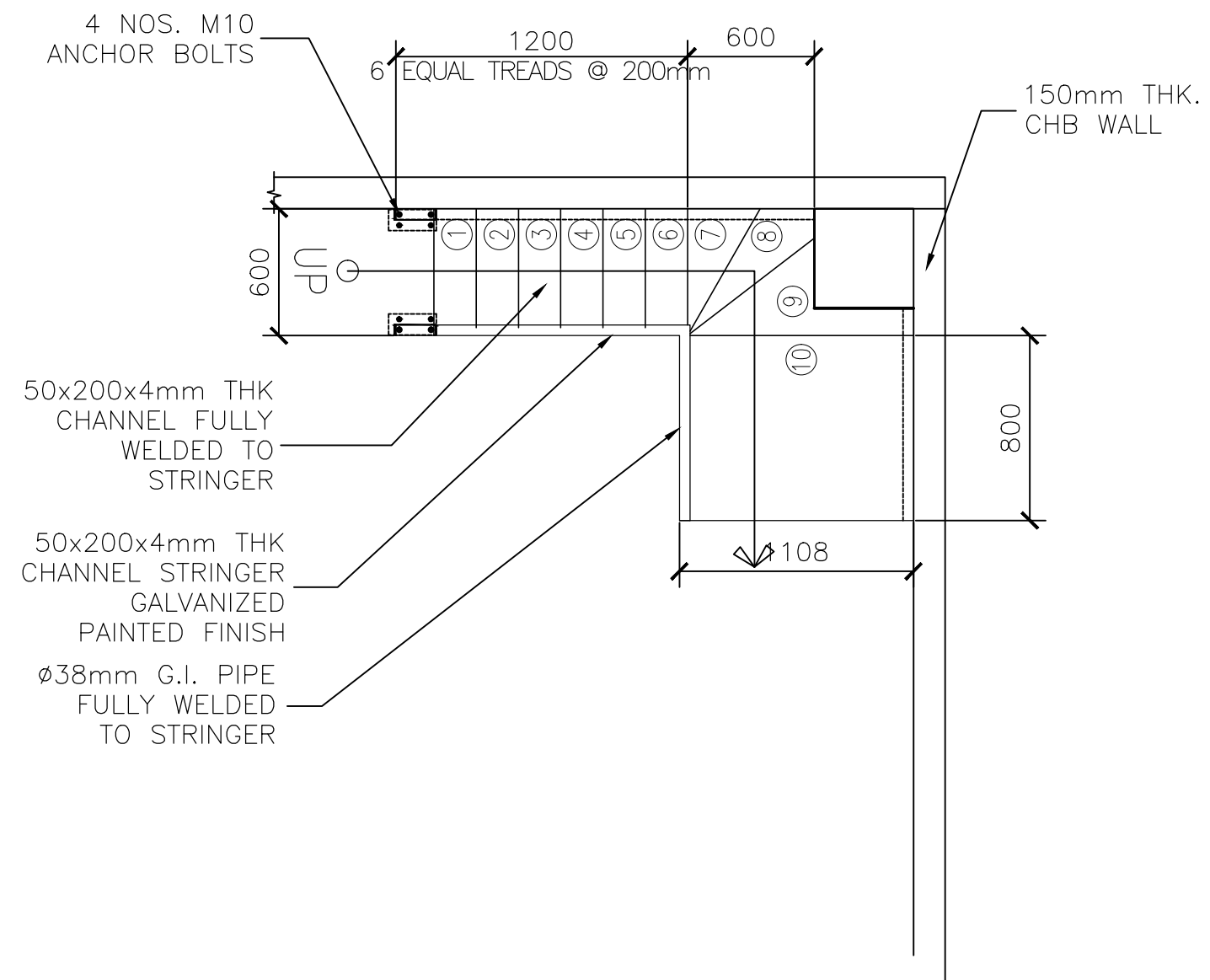


1 ROOFING PLAN  
SCALE: NTS



2 TRUSS DETAIL  
S-3 SCALE: NTS

PROJECT TITLE RENOVATION OF HMTS ANNEX, REPAIR ROOM AND STORAGE	SHEET NO. <b>S-3</b>	DRAWN BY: EDGAR DELA CRUZ WX. FACILITIES SPECIALIST II	CHECK BY ROMEO M. PELAGIO OIC, INFRA UNIT, ETSD	VERIFIED BY JESSIE B. ARCE CHIEF, MEIES, ETSD	NOTED BY EDWIN MANRESA CHIEF, ETSD	RECOMMENDING APPROVAL CATALINO L. DAVIS DA, AES	APPROVED BY: DR. VICENTE B. MALANO ADMINISTRATOR
LOCATION FIRST FLOOR PAGASA, WFFC COMPOUND, AGHAM RD., DILIMAN, QUEZON CITY							



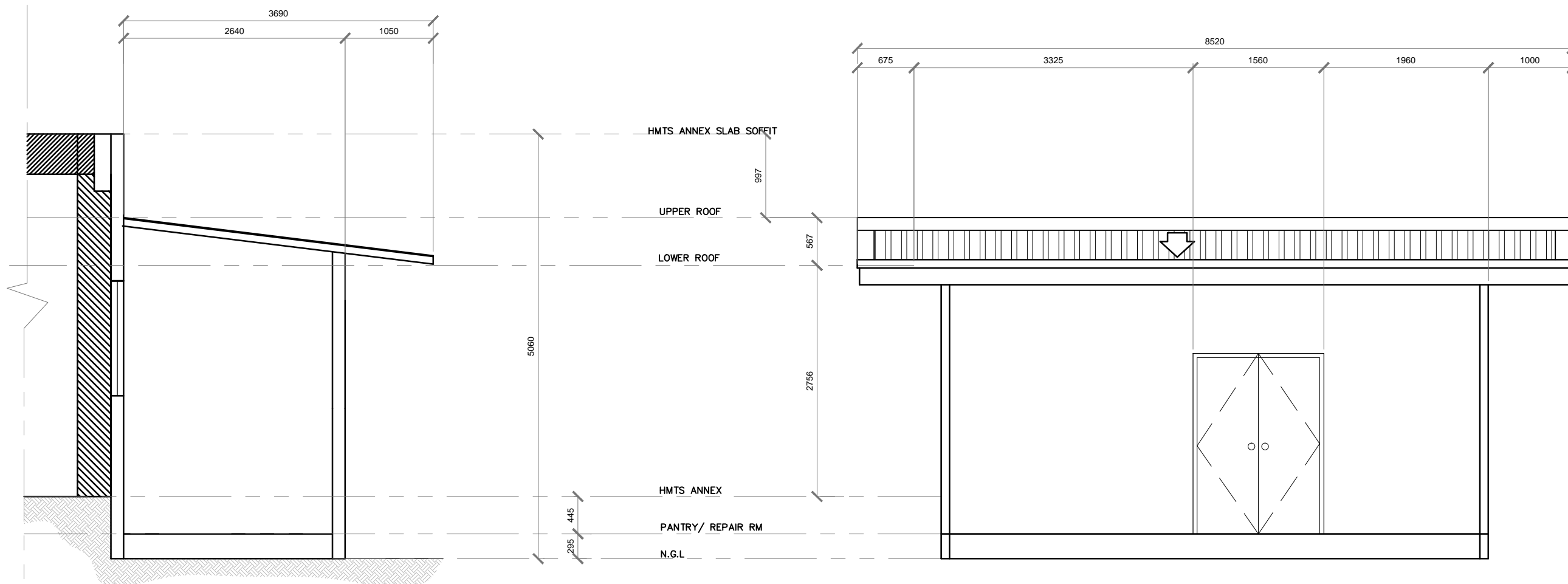
1  
S-4

# STAIR DETAIL

SCALE: NTS

PROJECT TITLE REDEVELOPMENT FOR HMTS ANNEX, REPAIR ROOM AND STORAGE	SHEET NO. <b>S-4</b>	DRAWN BY: EDGAR DELA CRUZ WX. FACILITIES SPECIALIST II	CHECK BY ROMEO M. PELAGIO OIC, INFRA UNIT, ETSD	VERIFIED BY JESSIE B. ARCE CHIEF, MEIES, ETSD	NOTED BY MAXIMO PERALTA OIC, ETSD	RECOMMENDING APPROVAL CATALINO L. DAVIS DA, AES	APPROVED BY: DR. VICENTE B. MALANO ADMINISTRATOR
LOCATION FIRST FLOOR PAGASA, WFFC COMPOUND, AGHAM RD., DILIMAN, QUEZON CITY							





1 SECTION A  
A-4 SCALE: NTS

2 SECTION B  
A-4 SCALE: NTS

PROJECT TITLE RENOVATION OF HMTS ANNEX, REPAIR ROOM AND STORAGE	SHEET NO. <b>A-4</b>	DRAWN BY: EDGAR DELA CRUZ WX. FACILITIES SPECIALIST II	CHECK BY ROMEO M. PELAGIO OIC, INFRA UNIT, ETSD	VERIFIED BY JESSIE B. ARCE CHIEF, MEIES, ETSD	NOTED BY EDWIN MANRESA CHIEF, ETSD	RECOMMENDING APPROVAL CATALINO L. DAVIS DA, AES	APPROVED BY: DR. VICENTE B. MALANO ADMINISTRATOR
LOCATION FIRST FLOOR PAGASA, WFFC COMPOUND, AGHAM RD., DILIMAN, QUEZON CITY							